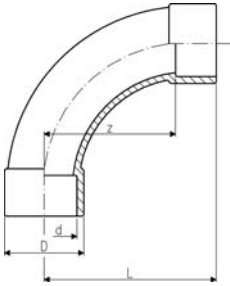


Adhesive Jointed Fittings

29 00 01

Bend 90°, ABS metric

- Radius = 2 d



d [mm]	PN	Code	SP	kg	z [mm]	D [mm]	L [mm]
20	16	729 000 106	-	0.027	40	27	58
25	16	729 000 107	10	0.038	50	35	69
32	10	729 000 108	-	0.051	64	38	86
40	10	729 000 109	-	0.158	80	54	109
50	10	729 000 110	-	0.206	100	61	131
63	10	729 000 111	-	0.387	126	76	164
75	10	729 000 112	-	0.585	150	90	194
90	10	729 000 113	-	0.750	180	113	231
110	10	729 000 114	-	2.030	220	137	281
140	10	729 000 116	-	4.100	280	168	356
160	10	729 000 117	-	5.600	320	191	406

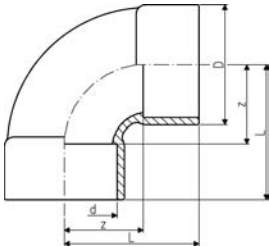
29 01 01

Bend 90° short pattern, ABS metric

- Radius = 0,75 d
- >d225 - maximum operating temperature: +40°C



$r = 0,75 d$

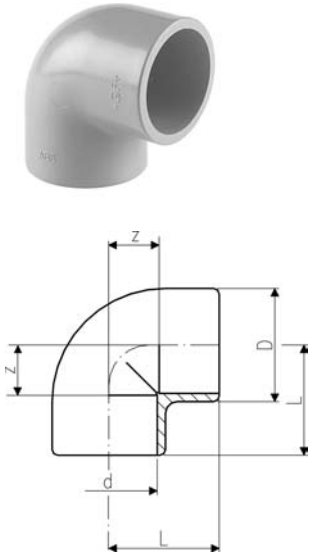


d [mm]	PN	Code	SP	kg	z [mm]	D [mm]	L [mm]
225	10	729 010 120	-	5.650	168	256	287
280	6	729 010 122	-	16.000	210	318	357
315	6	729 010 123	-	21.000	237	356	401

29 10 01

Elbow 90°, ABS metric

- >d225 - maximum operating temperature: +40°C



d	d	PN	Code	SP	kg	z	D	L	
[mm]	[inch]					[mm]	[mm]	[mm]	
16		16	729 100 105	10	0.007	9	21	23	
20		16	729 100 106	10	0.010	11	26	27	
25		16	729 100 107	10	0.017	14	31	33	
32		10	729 100 108	10	0.032	17	40	39	
40		10	729 100 109	10	0.051	21	49	47	
50		10	729 100 110	5	0.103	26	61	57	
63		10	729 100 111	-	0.196	33	76	72	
75	2 ½	10	729 100 112	-	0.308	40	90	84	
90		10	729 100 113	-	0.429	46	110	97	
110		10	729 100 114	-	1.125	61	136	122	
140	5	10	729 100 116	-	1.470	70	162	146	
160		10	729 100 117	-	2.150	80	185	166	
200		10	729 100 119	-	3.372	101	225	207	
250		6	729 100 121	-	8.200	131	282	263	

29 15 01

Elbow 45°, ABS metric

- >d225 - maximum operating temperature: +40°C

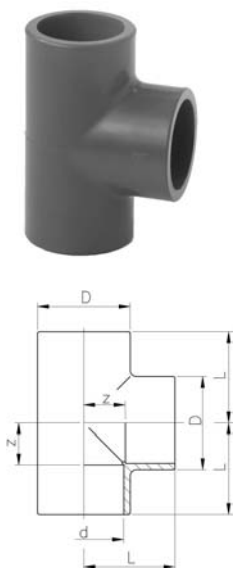


d	d	PN	Code	SP	kg	z	D	L	
[mm]	[inch]					[mm]	[mm]	[mm]	
20		16	729 150 106	10	0.019	5	25	21	
25		16	729 150 107	10	0.029	6	31	25	
32		16	729 150 108	10	0.046	8	40	30	
40		10	729 150 109	10	0.082	10	49	36	
50		10	729 150 110	5	0.121	12	61	43	
63		10	729 150 111	-	0.144	14	76	52	
75	2 ½	10	729 150 112	-	0.228	17	89	61	
90		10	729 150 113	-	0.362	20	107	71	
110		10	729 150 114	-	0.775	28	131	89	
140	5	10	729 150 116	-	1.190	32	162	108	
160		10	729 150 117	-	1.680	36	185	122	
200		10	729 150 119	-	2.506	43	225	149	
225		10	729 150 120	-	3.100	49	250	168	
250		6	729 150 121	-	7.200	60	282	192	
280		6	729 150 122	-	10.500	66	318	213	
315		6	729 150 123	-	14.600	74	356	239	

29 20 01

Tee 90°, ABS metric

- >d225 - maximum operating temperature: +40°C

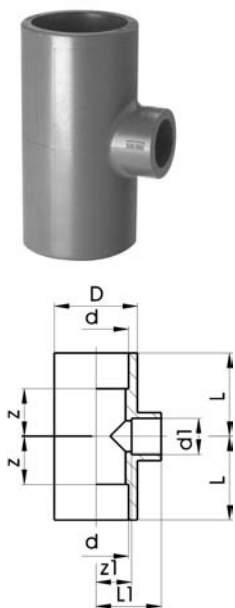


d [mm]	d [inch]	PN	Code	SP	kg	z [mm]	D [mm]	L [mm]
16		16	729 200 105	10	0.010	9	21	23
20		16	729 200 106	10	0.014	11	25	27
25		16	729 200 107	10	0.024	14	31	33
32		10	729 200 108	10	0.042	17	40	39
40		10	729 200 109	10	0.074	21	49	47
50		10	729 200 110	5	0.131	26	61	57
63		10	729 200 111	-	0.250	34	76	72
75	2 ½	10	729 200 112	-	0.421	40	90	84
90		10	729 200 113	-	0.687	47	107	98
110		10	729 200 114	-	1.020	55	133	116
140	4	10	729 200 116	-	2.500	71	169	147
160		10	729 200 117	-	3.700	81	193	167
200		10	729 200 119	-	4.430	101	225	207
225		10	729 200 120	-	6.850	114	256	233
250		6	729 200 121	-	12.400	132	282	263
280		6	729 200 122	-	17.300	152	318	298
315		6	729 200 123	-	24.100	168	356	332

29 20 01

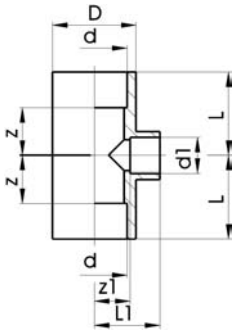
Tees 90°, reducing, ABS metric

* Dimension 110-90-110 is a Tee 90° equal delivered with the required reducing bush



d [mm]	d1 [mm]	PN	Code	SP	kg
25	20	16	729 200 134	10	0.029
32	25	10	729 200 138	10	0.048
40	25	10	729 200 151	-	0.081
40	32	10	729 200 147	10	0.085
50	25	10	729 200 010	5	0.135
50	32	10	729 200 164	5	0.200
63	25	10	729 200 011	-	0.245
63	32	10	729 200 178	-	0.249
63	50	10	729 200 170	-	0.265
75	40	10	729 200 182	-	0.500
75	63	10	729 200 184	-	0.518
90	32	10	729 200 143	-	1.000
90	63	10	729 200 146	-	0.900
110	32	10	729 200 144	-	2.000
110	50	10	729 200 136	-	1.900
*110	90	10	729 200 137	-	1.899
140	50	10	729 200 148	-	1.899
140	75	10	729 200 149	-	2.500
160	90	10	729 200 158	-	2.800
200	110	10	729 200 153	-	4.900
225	110	10	729 200 156	-	7.500
225	160	10	729 200 157	-	7.900

d [mm]	d1 [mm]	z [mm]	z1 [mm]	D [mm]	L [mm]	L1 [mm]
25	20	14	14	33	33	30
32	25	17	17	41	39	36
40	25	23	23	50	49	42
40	32	23	23	50	49	45
50	25	28	28	62	59	47
50	32	28	28	62	59	50
63	25	34	34	77	73	53
63	32	35	34	77	73	56
63	50	35	34	77	73	65



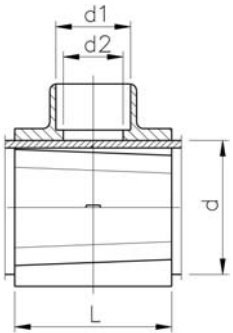
d [mm]	d1 [mm]	z [mm]	z1 [mm]	D [mm]	L [mm]	L1 [mm]
75	40	40	41	92	84	66
75	63	40	47	92	84	84
90	32	46	55	110	97	93
90	63	46	55	110	97	93
110	32	56	67	133	117	89
110	50	56	67	133	117	98
*110	90	61	65	138	122	136
140	50	72	82	172	148	113
140	75	72	78	172	148	122
160	90	81	91	192	167	142
200	110	106	131	232	213	192
225	110	119	143	257	239	204
225	160	119	119	257	239	205



Branch Saddles ABS

Model:

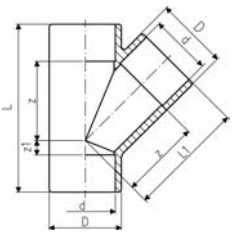
- For ABS-pipes
- Top saddle (ABS) for solvent cementing
- Bottom part and wedges made from PVC-U
- Outlet with solvent cement socket metric
- PN 10



d [mm]	Code	SP	kg	d1 [mm]	d2 [mm]	Tapping-Ø [mm]	L [mm]
90	169 110 056	1	0.786	50	40	39	105
110	169 110 066	-	0.864	50	40	39	105
160	169 110 097	1	1.185	63	49	48	120
225	169 110 117	-	1.483	63	49	48	120

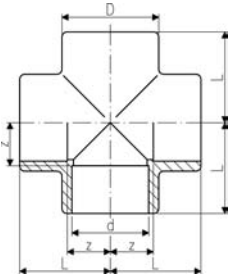
29 25 01

Tee 45°, ABS metric



d [mm]	PN	Code	SP	kg	z [mm]	z1 [mm]	D [mm]	L [mm]	L1 [mm]
20	10	729 250 106	10	0.027	30	6	28	68	46
25	10	729 250 107	10	0.043	36	9	33	83	55
32	10	729 250 108	10	0.073	45	10	41	99	67
40	10	729 250 109	-	0.119	56	10	50	118	82
50	10	729 250 110	-	0.202	66	12	60	140	97
63	10	729 250 111	-	0.325	85	14	74	175	123
75	6	729 250 112	-	0.637	101	18	91	207	145
90	6	729 250 113	-	0.940	122	20	107	245	173
110	6	729 250 114	-	1.870	149	27	134	298	210
140	6	729 250 116	-	4.315	190	34	168	376	266

29 30 01

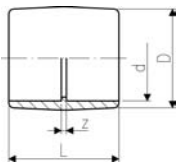
Crosses, ABS metric

d [mm]	PN	Code	SP	kg	z [mm]	D [mm]	L [mm]
32	10	729 300 108	-	0.070	17	43	39
63	10	729 300 111	-	0.361	34	79	72

29 91 01

Socket, ABS metric

- >d225 - maximum operating temperature: +40°C

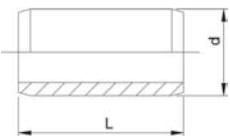


d [mm]	d [inch]	PN	Code	SP	kg	z [mm]	D [mm]	L [mm]
16		16	729 910 105	10	0.005	3	22	31
20		16	729 910 106	10	0.007	3	26	35
25		16	729 910 107	10	0.011	3	32	41
32		10	729 910 108	10	0.020	3	40	47
40		10	729 910 109	10	0.034	3	49	55
50		10	729 910 110	10	0.060	3	61	65
63		10	729 910 111	5	0.107	3	76	79
75	2 ½	10	729 910 112	-	0.140	4	87	92
90		10	729 910 113	-	0.242	5	104	107
110		10	729 910 114	-	0.570	5	131	132
140	5	10	729 910 116	-	0.760	7	162	159
160		10	729 910 117	-	1.176	8	183	180
200		10	729 910 119	-	1.480	9	221	221
225		10	729 910 120	-	2.500	10	253	248
250		6	729 910 121	-	5.400	16	284	272
280		6	729 910 122	-	6.600	16	321	302
315		6	729 910 123	-	8.100	16	356	338

29 90 09

Barrel Nipple, ABS metric**Model:**

- For quick connections between fittings
- For the shortest possible distance between fittings
- Overall length L = 2 x socket length



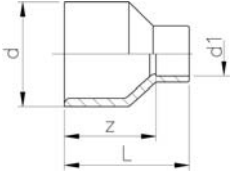
d [mm]	PN	Code	SP	kg	L [mm]
16	16	729 900 905	-	0.003	28
20	16	729 900 906	-	0.004	32
25	16	729 900 907	-	0.007	38
32	10	729 900 908	-	0.009	44
40	10	729 900 909	-	0.017	52
50	10	729 900 910	-	0.032	62
63	10	729 900 911	-	0.063	76
75	10	729 900 912	-	0.102	88
90	10	729 900 913	-	0.173	102
110	10	729 900 914	-	0.309	122

29 91 03

Reducing Bushes Long, ABS metric

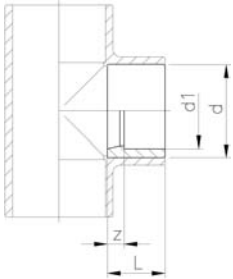
Model:

- With spigot and solvent cement socket



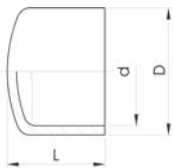
d [mm]	d1 [mm]	PN	Code	SP	kg	z [mm]	L [mm]
32	20	10	729 910 342	-	0.016	30	46
40	25	10	729 910 347	10	0.026	36	55
50	25	10	729 910 354	10	0.041	44	63
63	32	10	729 910 360	5	0.077	54	76
75	40	10	729 910 366	5	0.115	62	88
90	63	10	729 910 371	-	0.218	74	112

29 90 03

Reducing Bush, ABS metric

d [mm]	d1 [mm]	PN	Code	SP	kg	z [mm]	L [mm]
20	16	16	729 900 334	10	0.003	2	16
25	20	16	729 900 337	10	0.005	3	19
32	20	10	729 900 342	10	0.012	6	22
32	25	10	729 900 341	10	0.009	4	22
40	20	10	729 900 348	10	0.016	10	26
40	25	10	729 900 347	10	0.016	7	26
40	32	10	729 900 346	10	0.012	4	26
50	20	10	729 900 355	10	0.024	15	31
50	25	10	729 900 354	10	0.025	12	31
50	32	10	729 900 353	-	0.035	9	31
50	40	10	729 900 352	10	0.038	5	31
63	32	10	729 900 360	10	0.060	16	38
63	40	10	729 900 359	10	0.067	12	38
63	50	10	729 900 358	10	0.044	7	36
75	50	10	729 900 365	10	0.105	13	44
75	63	10	729 900 364	10	0.076	7	44
90	50	10	729 900 372	-	0.136	20	51
90	63	10	729 900 371	-	0.130	14	51
90	75	10	729 900 370	-	0.133	7	51
110	63	10	729 900 378	-	0.238	24	61
110	90	10	729 900 376	-	0.196	10	61
140	110	10	729 900 385	-	0.454	15	76
160	110	10	729 900 390	-	0.666	25	86
160	140	10	729 900 388	-	0.416	10	86
200	160	10	729 900 392	-	0.818	20	106
225	160	10	729 900 396	-	1.640	33	119
225	200	10	729 900 181	-	1.440	13	119
250	225	6	729 900 303	-	1.700	12	131
280	250	6	729 900 306	-	2.500	15	146
315	280	6	729 900 312	-	3.350	17	164

29 96 01

Cap, ABS metric

d [mm]	PN	Code	SP	kg	D [mm]	L [mm]
16	16	729 960 105	10	0.006	26	24
20	16	729 960 106	10	0.008	30	25
25	16	729 960 107	10	0.013	37	30
32	10	729 960 108	10	0.020	44	34
40	10	729 960 109	10	0.034	55	41
50	10	729 960 110	10	0.034	64	44
63	10	729 960 111	5	0.086	80	54
75	10	729 960 112	5	0.115	87	65
90	10	729 960 113	-	0.215	112	77
110	10	729 960 114	-	0.480	145	101
140	10	729 960 116	-	0.880	163	114
160	10	729 960 117	-	1.130	188	130

29 96 04

Hose Connectors, ABS metric

Model:

- With solvent cement spigot metric and parallel hose connection



d [mm]	PN	Code	SP	kg	D [mm]	L [mm]
16	10	729 960 405	10	0.007	16	57
20	10	729 960 406	10	0.011	20	73
25	10	729 960 407	10	0.016	25	79
32	10	729 960 408	10	0.026	30	89

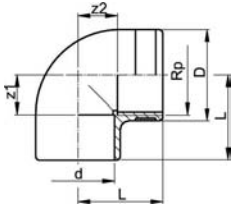
Adaptor Fittings

29 10 02

Elbow 90°, ABS metric

Model:

- With solvent cement socket metric and parallel female thread (Rp)
- Reinforcing ring stainless (A2)
- Connection to plastic or metal
- Do not use thread sealing pastes that are harmful to ABS
- Install with low mechanical stress and avoid large cyclic temperature changes



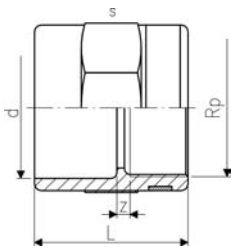
d [mm]	Rp [inch]	PN	Code	SP	kg	z1 [mm]	z2 [mm]	D [mm]	L [mm]
20	1/2	10	729 100 206	10	0.018	11	14	30	27
25	3/4	10	729 100 207	10	0.028	14	17	35	33
32	1	10	729 100 208	10	0.047	17	22	45	39
40	1 1/4	10	729 100 209	10	0.088	23	27	55	50
50	1 1/2	10	729 100 210	5	0.128	27	36	62	58
63	2	10	729 100 211	5	0.233	33	46	75	73

29 91 02

Socket, ABS metric

Model:

- With solvent cement socket metric and parallel female thread Rp
- With BSP parallel female thread (Rp) reinforced (A2)
- Reinforcing ring stainless (A2)
- Connection to plastic or metal
- Do not use thread sealing pastes that are harmful to ABS
- Install with low mechanical stress and avoid large cyclic temperature changes



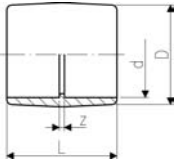
d [mm]	Rp [inch]	PN	Code	SP	kg	z [mm]	L [mm]	s [mm]
20	1/2	10	729 910 206	10	0.020	4	35	32
25	3/4	10	729 910 207	10	0.030	3	40	36
32	1	10	729 910 208	10	0.040	3	45	46
40	1 1/4	10	729 910 209	10	0.069	5	51	55
50	1 1/2	10	729 910 210	10	0.100	7	59	65
63	2	10	729 910 211	5	0.162	7	69	80

29 91 31

Adaptor Socket, ABS metric - Inch BS (ASTM)

Model:

- with BS Inch and metric solvent cement sockets



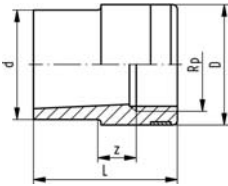
d [mm]	Inch	PN	Code	SP	kg	z [mm]	L [mm]	D [mm]
16	3/8	10	729 913 105	-	0.007	5	35	23
20	1/2	10	729 913 106	-	0.010	5	38	27
25	3/4	10	729 913 107	-	0.016	5	45	33
32	1	10	729 913 108	-	0.025	5	51	41
40	1 1/4	10	729 913 109	-	0.045	5	60	51
50	1 1/2	10	729 913 110	-	0.070	4	65	59
63	2	10	729 913 111	-	0.130	5	79	75
75	2 1/2	10	729 913 112	-		8	93	95
90	3	10	729 913 113	-	0.365	6	108	104
110	4	10	729 913 115	-	0.630	7	135	134

29 91 04

Reducing Bushes metric-Rp, ABS metric-Rp

Model:

- With solvent cement spigot metric and parallel female thread Rp
- Reinforcing ring stainless (A2)
- Connection to plastic or metal
- Do not use thread sealing pastes that are harmful to ABS
- Install with low mechanical stress and avoid large cyclic temperature changes



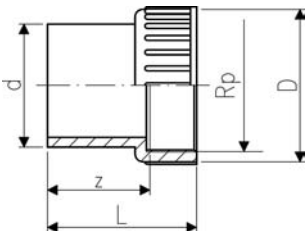
d [mm]	Rp [inch]	PN	Code	SP	kg	z [mm]	D [mm]	L [mm]	s [mm]
20	3/8	10	729 910 434	10	0.012	24	25	35	15
25	1/2	10	729 910 437	10	0.018	27	30	41	21
32	3/4	10	729 910 441	10	0.027	32	35	48	33
40	1	10	729 910 446	10	0.048	38	45	56	60
50	1 1/4	10	729 910 452	10	0.073	46	55	66	99
63	1 1/2	10	729 910 458	5	0.106	57	62	77	150

29 90 04

Adaptor, ABS metric - Rp

Model:

- With solvent cement spigot metric and parallel female thread Rp
- Connection to plastic thread only
- Do not use thread sealing pastes that are harmful to ABS
- Install with low mechanical stress and avoid large cyclic temperature changes



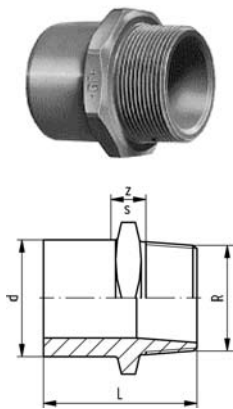
d [mm]	Rp [inch]	PN	Code	SP	kg	z [mm]	L [mm]	D [mm]
20	1/2	10	729 900 406	10	0.009	21	37	28
25	3/4	10	729 900 407	10	0.014	23	41	33
32	1	10	729 900 408	-	0.026	27	48	42
40	1 1/4	10	729 900 409	10	0.046	33	56	52
50	1 1/2	10	729 900 410	10	0.073	38	61	62
63	2	10	729 900 411	5	0.127	47	74	77

29 91 05

Adaptor Spigot-Nipple, ABS metric - R

Model:

- With solvent cement spigot metric and taper male thread R
- Connection to plastic thread only
- Do not use thread sealing pastes that are harmful to ABS
- Install with low mechanical stress and avoid large cyclic temperature changes



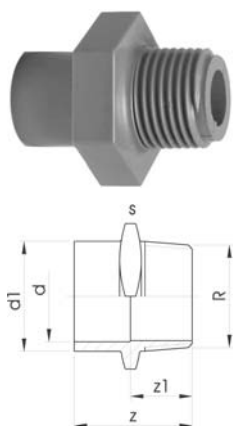
d [mm]	R [inch]	PN	Code	SP	kg	z [mm]	s [mm]
16	3/8	10	729 910 505	10	0.009	35	27

29 91 05

Adaptor Socket-Nippel, ABS metric - R

Model:

- With solvent cement spigot/socket metric and taper male thread R
- Connection for plastic threads
- Do not use thread sealing pastes that are harmful to ABS



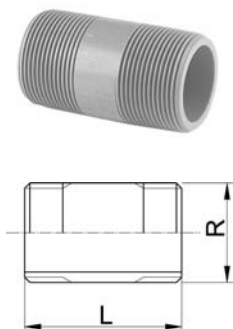
d [mm]	d1 [mm]	R [inch]	PN	Code	SP	kg	z [mm]	z1 [mm]	s [mm]
16	20	1/2	10	729 910 556	10	0.012	42	28	32
20	25	3/4	10	729 910 557	10	0.020	47	31	36
25	32	1	10	729 910 558	10	0.031	54	35	46
32	40	1 1/4	10	729 910 559	10	0.050	60	38	55
40	50	1 1/2	10	729 910 560	10	0.070	66	40	65
50	63	2	10	729 910 561	5	0.123	78	47	80

29 91 15

Barrel Nipple, ABS - R

Model:

- BSP taper male threads (R)
- Connection to plastic thread only
- Do not use thread sealing pastes that are harmful to ABS
- Install with low mechanical stress and avoid large cyclic temperature changes



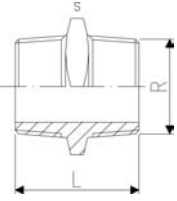
R [inch]	PN	Code	SP	kg	L [mm]
3/8	10	729 911 505	-	0.014	43
1/2	10	729 911 506	-	0.014	50
3/4	10	729 911 507	-	0.021	56
1	10	729 911 508	-	0.035	63
1 1/4	10	729 911 509	-	0.053	75
1 1/2	10	729 911 510	-	0.031	88
2	10	729 911 511	-	0.135	88
3	10	729 911 513	-	0.196	128
4	10	729 911 515	-	0.357	153

29 91 19

Hexagon Nipple, ABS - R

Model:

- With taper male thread R
- Connection to plastic thread only
- Do not use thread sealing pastes that are harmful to ABS
- Install with low mechanical stress and avoid large cyclic temperature changes



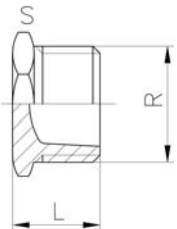
R [inch]	PN	Code	SP	kg	L [mm]	s [mm]	
½	10	729 911 906	10	0.009	45	22	
¾	10	729 911 907	10	0.014	49	27	
1	10	729 911 908	10	0.026	57	36	

29 96 19

Plug, ABS - R

Model:

- With taper male thread R
- Connection to plastic thread only
- Do not use thread sealing pastes that are harmful to ABS



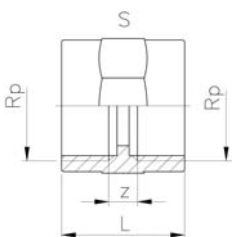
R [inch]	PN	Code	SP	kg	s [mm]	L [mm]	
½	10	729 961 906	10	0.008	27	25	

29 91 06

Threaded socket, ABS metric - Rp

Model:

- With parallel female thread Rp
- Connection to plastic thread only
- Do not use thread sealing pastes that are harmful to ABS
- Install with low mechanical stress and avoid large cyclic temperature changes



Rp [inch]	PN	Code	SP	kg	z [mm]	L [mm]	s [mm]	
½	10	729 910 606	10	0.019	9	35	32	
¾	10	729 910 607	10	0.022	9	39	36	
1	10	729 910 608	10	0.041	11	45	46	

Unions

29 51 01

Unions, ABS metric

Model:

- Union end: Solvent cement socket metric
- Union bush: Solvent cement socket metric
- Gasket: O-ring EPDM No. 48 41 00



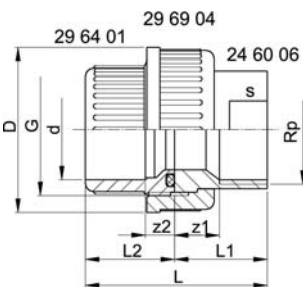
d [mm]	PN	Code	SP	kg	z1 [mm]	z2 [mm]	D [mm]	L1 [mm]	L2 [mm]	G/Tr	
16	10	729 510 105	10	0.025	5	10	35	19	24		3/4
20	10	729 510 106	10	0.035	4	10	43	21	26		1
25	10	729 510 107	10	0.050	5	10	53	24	29		1 1/4
32	10	729 510 108	10	0.070	5	10	60	27	32		1 1/2
40	10	729 510 109	10	0.130	5	12	74	32	38		2
50	10	729 510 110	5	0.170	3	14	83	33	40		2 1/4
63	10	729 510 111	-	0.340	3	18	103	40	46		2 3/4
75	10	729 510 112	-	0.461	3	18	135	47	62		Tr 108x5
90	10	729 510 113	-	0.694	5	18	158	56	69		Tr 128x5
110	10	729 510 114	-	1.069	5	11	158	66	72		Tr 154x5

29 54 02

Adaptor Unions, ABS / Stainless Steel metric - Rp

Model:

- Union End: stainless steel WN 1.4404 (316L), parallel female thread Rp
- Union Bush: solvent cement socket ABS metric
- Union Nut: ABS
- Gasket: O-ring EPDM No. 48 41 00



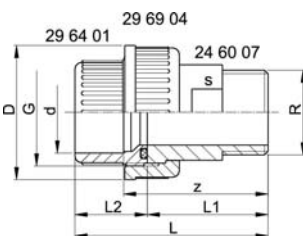
d [mm]	Rp [inch]	PN	EPDM Code	kg	z1 [mm]	z2 [mm]	D [mm]	L [mm]	L1 [mm]	L2 [mm]	G [inch]	s [mm]	
16	3/8	10	729 540 205	0.053	9	10	35	43	19	24	3/4	19	
20	1/2	10	729 540 206	0.096	11	10	43	50	24	26	1	24	
25	3/4	10	729 540 207	0.154	11	10	51	55	26	29	1 1/4	29	
32	1	10	729 540 208	0.212	12	10	58	61	29	32	1 1/2	36	
40	1 1/4	10	729 540 209	0.356	14	12	74	71	33	38	2	45	
50	1 1/2	10	729 540 210	0.455	15	14	83	79	34	45	2 1/4	54	
63	2	10	729 540 211	0.721	15	18	100	95	39	56	2 3/4	63	

29 54 07

Adaptor Unions, ABS/Stainless Steel metric - R

Model:

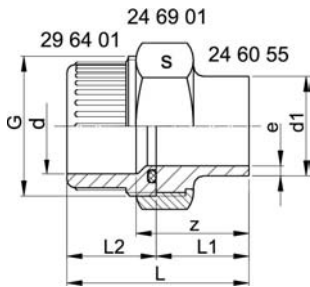
- Union End: stainless steel WN 1.4404 (316L), taper male thread R
- Union Bush: solvent cement socket ABS metric
- Union Nut: ABS
- Gasket: O-ring EPDM No. 48 41 00



d [mm]	R [inch]	PN	EPDM Code	kg	z [mm]	D [mm]	L [mm]	L1 [mm]	L2 [mm]	G [inch]	s [mm]	
16	3/8	10	729 540 705	0.073	40	35	54	30	24	3/4	19	
20	1/2	10	729 540 706	0.126	44	43	60	34	26	1	24	
25	3/4	10	729 540 707	0.174	46	51	65	36	29	1 1/4	32	
32	1	10	729 540 708	0.262	50	58	72	40	32	1 1/2	37	
40	1 1/4	10	729 540 709	0.476	58	74	84	46	38	2	48	
50	1 1/2	10	729 540 710	0.535	62	83	93	48	45	2 1/4	54	
63	2	10	729 540 711	0.931	73	100	111	55	56	2 3/4	69	

29 54 55

Adaptor Unions, ABS/Stainless Steel metric - Welding End

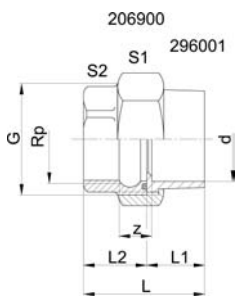


Model:

- Union End: stainless steel WN 1.4404 (316L) with welding end
- Union Bush: solvent cement socket ABS metric
- Union Nut: stainless steel WN 1.4404 (316L)
- Gasket: O-ring EPDM No. 48 41 00

d [mm]	d1 [mm]	PN	EPDM Code	kg	z [mm]	L [mm]	L1 [mm]	L2 [mm]	e [mm]	G [inch]	s [mm]
16	17	10	729 545 505	0.101	28	42	18	24	1.6	3/4	32
20	21	10	729 545 506	0.176	32	48	22	26	2.0	1	41
25	27	10	729 545 507	0.204	33	52	23	29	2.0	1 1/4	46
32	34	10	729 545 508	0.313	36	58	26	32	2.0	1 1/2	55
40	42	10	729 545 509	0.493	38	64	26	38	2.0	2	68
50	48	10	729 545 510	0.566	42	73	28	45	2.0	2 1/4	74
63	60	10	729 545 511	0.902	50	88	32	56	2.6	2 3/4	88

Adapter Union Brass/ABS metric - Rp

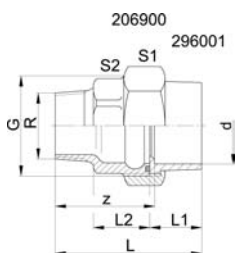


Model:

- O-Ring special for Temperature < 0°C
- Union End: ABS, solvent cement socket metric
- Union Bush: Brass BSP parallel female thread (Rp)
- Union Nut: brass
- Gasket: O-Ring No. 48 41 00 EPDM

d [mm]	Rp [inch]	PN	Code	kg	z [mm]	G [inch]	L1 [mm]	L2 [mm]	S1 [mm]	S2 [mm]
16	3/8	10	729 550 255	0.086	10	3/4	19	17	30	27
20	1/2	10	729 550 256	0.134	11	1	21	20	38	27
25	3/4	10	729 550 257	0.221	12	1 1/4	24	23	47	32
32	1	10	729 550 258	0.263	13	1 1/2	27	26	52	38
40	1 1/4	10	729 550 259	0.437	13	2	32	28	66	47
50	1 1/2	10	729 550 260	0.508	14	2 1/4	33	29	72	53
63	2	10	729 550 261	0.774	15	2 3/4	40	34	87	65

Adapter Union Brass/ABS metric - R



Model:

- with O-ring
- Union End: ABS, solvent cement socket metric
- Union Bush: Brass, BSP, taper male thread R
- Union Nut: brass
- Gasket: O-Ring No. 48 41 00

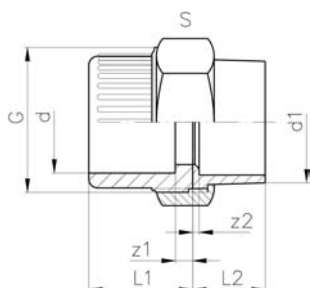
d [mm]	R [inch]	PN	Code	kg	z [mm]	G [inch]	L1 [mm]	L2 [mm]	S1 [mm]	S2 [mm]
16	3/8	10	729 550 755	0.109	32	3/4	19	29	30	27
20	1/2	10	729 550 756	0.152	36	1	21	32	38	27
25	3/4	10	729 550 757	0.261	53	1 1/4	24	50	47	27
32	1	10	729 550 758	0.330	57	1 1/2	27	54	52	34
40	1 1/4	10	729 550 759	0.437	58	2	32	54	66	43
50	1 1/2	10	729 550 760	0.675	65	2 1/4	33	62	72	50
63	2	10	729 550 761	1.040	73	2 3/4	40	69	87	61

20 51 01

Adaptor Union, Copper for soldering, ABS

Model:

- Union End: Copper
- Union Bush: solvent cement socket ABS metric
- Union Nut: brass
- Gasket: O-ring EPDM No. 48 41 00



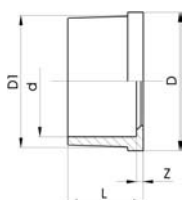
d	d1	PN	Code	kg	L1	L2	z1	z2	G	s
[mm]	[mm]				[mm]	[mm]	[mm]	[mm]	[inch]	[mm]
16	18	10	720 510 105	0.079	25	17	11	4	3/4	32
20	22	10	720 510 106	0.140	26	19	9	3	1	40
25	28	10	720 510 107	0.269	29	28	9	6	1 1/4	50
32	35	10	720 510 108	0.198	32	27	10	5	1 1/2	52
40	42	10	720 510 109	0.350	38	35	12	6	2	66
50	54	10	720 510 110	0.438	40	46	14	3	2 1/4	72

29 60 01

Union End, ABS metric

Model:

- Solvent cement socket metric
- For adaptor unions 29 53 02, 29 53 07, 29 55 02, 29 55 07
- For union 29 51 01



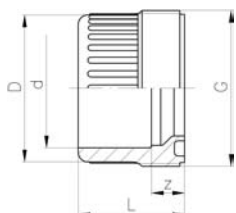
d	PN	Code	SP	kg	z	L	D	D1
[mm]					[mm]	[mm]	[mm]	[mm]
16	10	729 600 105	-	0.004	5	19	24	22.00
20	10	729 600 106	-	0.007	4	21	30	28.00
25	10	729 600 107	-	0.012	5	24	39	36.00
32	10	729 600 108	-	0.016	5	27	44	41.00
40	10	729 600 109	-	0.042	3	31	57	53.00
50	10	729 600 110	-	0.045	3	34	63	59.00
63	10	729 600 111	-	0.084	3	41	78	74.00
75	10	729 600 162	-	0.109	3	47	101	91.00
90	10	729 600 163	-	0.178	5	56	121	108.00
110	10	729 600 164	-	0.295	5	66	146	131.00

29 64 01

Union Bush, ABS metric

Model:

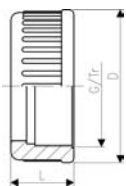
- Solvent cement socket metric
- For adaptor unions 29 53 02, 29 53 07, 29 55 02, 29 55 07
- For union 29 51 01
- Jointing Face: with O-Ring groove
- Jointing face: with O-ring groove



d	PN	Code	SP	kg	z	D	L	G/Tr
[mm]					[mm]	[mm]	[mm]	
16	10	729 640 105	-	0.008	10	24	24	3/4
20	10	729 640 106	-	0.011	10	28	26	1
25	10	729 640 107	-	0.016	10	33	29	1 1/4
32	10	729 640 108	-	0.023	10	41	32	1 1/2
40	10	729 640 109	-	0.039	12	50	38	2
50	10	729 640 110	-	0.040	14	62	40	2 1/4
63	10	729 640 111	-	0.100	18	77	56	2 3/4
75	10	729 640 112	-	0.160	18	93	62	Tr108x5
90	10	729 640 113	-	0.238	18	110	69	Tr128x5
110	10	729 640 114	-	0.330	11	133	72	Tr154x6

Union Nut, ABS**Model:**

- For union 23 51 01
- For adaptor unions 29 54 02, 29 54 07



d [mm]	PN	Code	SP	kg	D [mm]	L [mm]	G/Tr
16	10	729 690 405	-	0.009	35	21	3/4
20	10	729 690 406	-	0.014	43	23	1
25	10	729 690 407	-	0.018	53	25	1 1/4
32	10	729 690 408	-	0.024	60	27	1 1/2
40	10	729 690 409	-	0.049	74	30	2
50	10	729 690 410	-	0.070	83	34	2 1/4
63	10	729 690 411	-	0.101	103	38	2 3/4
75	10	729 690 012	-	0.188	135	40	Tr108x5
90	10	729 690 013	-	0.267	158	43	Tr128x5
110	10	729 690 014	-	0.423	188	48	Tr154x6

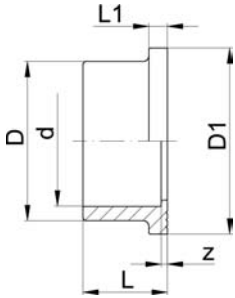
Flange Adaptors and Flanges

29 79 01

Flange Adaptor, ABS metric

Model:

- Jointing faces serrated
 - Counter part: Same flange adaptor or 29 79 11
 - Gasket: Order separately: Flat gasket 48 40 01 EPDM or 49 40 01 FPM
 - Flat gasket 48 40 01 EPDM or 49 40 01 FPM
 - Backing flange: Order separately
- >d225 - maximum operating temperature: +40°C



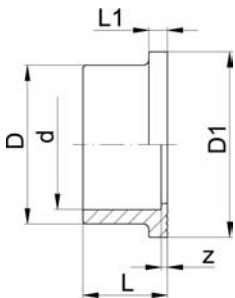
d [mm]	PN	Code	SP	kg	z [mm]	D [mm]	D1 [mm]	L [mm]	L1 [mm]
20	10	729 790 106	10	0.008	3	27	34	21	6
25	10	729 790 107	10	0.012	3	33	41	24	7
32	10	729 790 108	-	0.019	3	41	50	27	7
40	10	729 790 109	10	0.058	3	50	61	30	8
50	10	729 790 110	10	0.058	3	61	73	34	8
63	10	729 790 111	10	0.074	3	76	90	41	9
75	10	729 790 112	-	0.118	3	91	106	47	10
90	10	729 790 113	-	0.187	5	108	125	56	11
110	10	729 790 114	-	0.300	5	131	150	66	12
140	10	729 790 116	-	0.567	5	165	188	81	14
160	10	729 790 117	-	0.800	5	188	213	91	16
200	10	729 790 119	-	1.120	6	224	250	112	24
225	10	729 790 120	-	1.300	6	248	274	125	25
250	6	729 790 121	-	1.940	9	274	303	140	23
280	6	729 790 122	-	2.161	5	307	329	151	23
315	6	729 790 123	-	3.321	8	346	379	172	27

29 79 11

Flange Adaptors BS, Solvent Socket, ABS inch

Model:

- Jointing faces serrated
- Counterpart: Same flange adaptor or 29 79 01
- Gasket: Order separately: Flat gasket 48 40 01 EPDM or 49 40 01 FPM
- Backing flange: Order separately



d [inch]	PN	Code	SP	kg	z [mm]	D [mm]	D1 [mm]	L [mm]	L1 [mm]
½	10	729 791 106	-	0.007	3	27	34.00	21	6
¾	10	729 791 107	-	0.011	3	33	41.00	24	7
1	10	729 791 108	-	0.017	3	41	50.00	27	7
1 ¼	10	729 791 109	-	0.027	3	50	61.00	32	8
1 ½	10	729 791 110	-	0.048	3	61	73.00	33	8
2	10	729 791 111	-	0.078	3	77	91.00	40	9
3	10	729 791 113	-	0.187	5	108	125.00	56	11
4	10	729 791 115	-	0.309	5	136	155.00	69	12
6	10	729 791 117	-	0.963	5	198	217.00	96	16

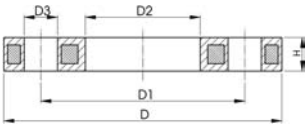
27 70 02

Backing Flanges, PP/Steel for Socket Systems metric

Model:

- PP-GF (30% glass-fibre reinforced) with steel ring
- Connecting dimensions: ISO 7005, EN 1092, DIN 2501; bolt circle PN 10

* Connecting dimension: ISO 2536



d [mm]	DN [mm]	PN	Code	D [mm]	D1 [mm]	D2 [mm]	D3 [mm]	H [mm]	AL	SC
20	15	16	727 700 206	95	65	28	14	12	4	M12
25	20	16	727 700 207	105	75	34	14	12	4	M12
32	25	16	727 700 208	115	85	42	14	16	4	M12
40	32	16	727 700 209	140	100	51	18	16	4	M16
50	40	16	727 700 210	150	110	62	18	18	4	M16
63	50	16	727 700 211	165	125	78	18	18	4	M16
75	65	16	727 700 212	185	145	92	18	18	4	M16
90	80	16	727 700 213	200	160	110	18	20	8	M16
110	100	16	727 700 214	220	180	133	18	20	8	M16
125	100	16	727 700 215	250	210	150	18	24	8	M16
140	125	16	727 700 216	250	210	167	18	24	8	M16
160	150	16	727 700 217	285	240	190	22	24	8	M20
200	200	16	727 700 219	340	295	226	22	27	8	M20
225	200	16	727 700 220	340	295	250	22	27	8	M20
*250	250	16	727 700 221	395	325	277	22	30	8	M20
280	250	16	727 700 222	395	350	310	22	30	12	M20
315	300	16	727 700 223	445	400	348	22	34	12	M20

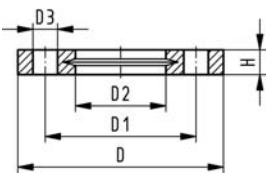
27 70 04
27 70 05

Backing Flanges, PP-V for Socket Systems metric

Model:

- Modern full-plastic flange PP-GF (30 % glass-fibre reinforced)
- With V-groove which applies force evenly on collar
- With integrated bolt retainers as an assembly aid
- Connecting dimension: ISO 7005 PN 10, EN 1092 PN 10, DIN 2501 PN 10

1) Suitable for socket- and butt fusion systems (no pictograph on flange)



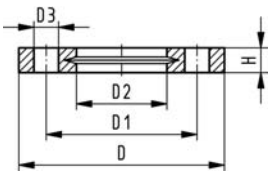
d [mm]	DN [mm]	PN	Code	D [mm]	D1 [mm]	D2 [mm]	D3 [mm]	H [mm]	AL	SC
20	15	16	727 700 406	95	65.00	28.00	14.0	16	4	M12
25	20	16	727 700 407	105	75.00	34.00	14.0	17	4	M12
32	25	16	727 700 408	115	85.00	42.00	14.0	18	4	M12
40	32	16	727 700 409	140	100.00	51.00	18.0	20	4	M16
50	40	16	727 700 410	150	110.00	62.00	18.0	22	4	M16
63	50	16	727 700 411	165	125.00	78.00	18.0	24	4	M16
75	65	16	727 700 412	185	145.00	92.00	18.0	26	4	M16
90	80	16	727 700 413	200	160.00	110.00	18.0	27	8	M16
110	100	16	727 700 414	220	180.00	133.00	18.0	28	8	M16
140	125	16	727 700 416	250	210.00	167.00	18.0	30	8	M16
160	150	16	727 700 417	285	241.00	190.00	22.0	32	8	M20
200	200	16	727 700 419	340	296.50	226.00	22.0	34	8	M20
225	200	16	727 700 420	340	295.00	250.00	22.0	34	8	M20
250	250	16	727 700 421	395	350.00	277.00	22.0	38	12	M20
280	250	16	727 700 422	395	350.00	310.00	22.0	38	12	M20
315	300	16	727 700 423	445	400.00	348.00	22.0	42	12	M20

27 70 14
27 70 15

Backing Flanges, PP-V for Socket Systems Inch/ANSI

Model:

- Modern full-plastic flange PP-GF (30 % glass-fibre reinforced)
- With V-groove which applies force evenly on collar
- With integrated bolt-fixing as an assembly aid
- Connection dimensions according to ANSI B 16.5, ASTM D 4024; bolt circle class 150



¹⁾ Suitable for socket- and butt fusion systems (no pictograph on flange)

Inch	d [mm]	DN [mm]	PN	Code	kg	D [mm]	D1 [mm]	D2 [mm]	D3 [mm]	H [mm]	AL	SC
1/2		15	16	727 701 406	0.080	95	60.00	28.00	16.0	16	4	M12
3/4		20	16	727 701 407	0.100	105	70.00	34.00	16.0	17	4	M12
1		25	16	727 701 408	0.140	115	79.00	42.00	16.0	18	4	M12
1 1/4		32	16	727 701 409	0.220	140	89.00	51.00	16.0	20	4	M16
1 1/2		40	16	727 701 410	0.210	150	98.00	62.00	16.0	22	4	M16
2		50	16	727 701 411	0.380	165	121.00	78.00	19.0	24	4	M16
2 1/2		65	16	727 701 412	0.480	185	140.00	92.00	19.0	26	4	M16
3		80	16	727 701 413	0.520	200	152.00	110.00	19.0	27	4	M16
4	110	100	16	727 701 414	0.680	229	190.00	133.00	19.0	28	8	M16
	160	150	16	727 700 417	1.200	285	241.00	190.00	22.0	32	8	M20
10		250	16	727 701 422	1.700	406	362.00	310.00	26.0	38	12	M20
12		300	16	727 701 423	2.400	483	432.00	348.00	26.0	42	12	M20